



# U.S. ARMY COMBAT CAPABILITIES DEVELOPMENT COMMAND SOLDIER CENTER

Joint Standardization Board – Expeditionary Shelters and Basing Equipment (JSB-ESBE)

Mr. Melvin Jee

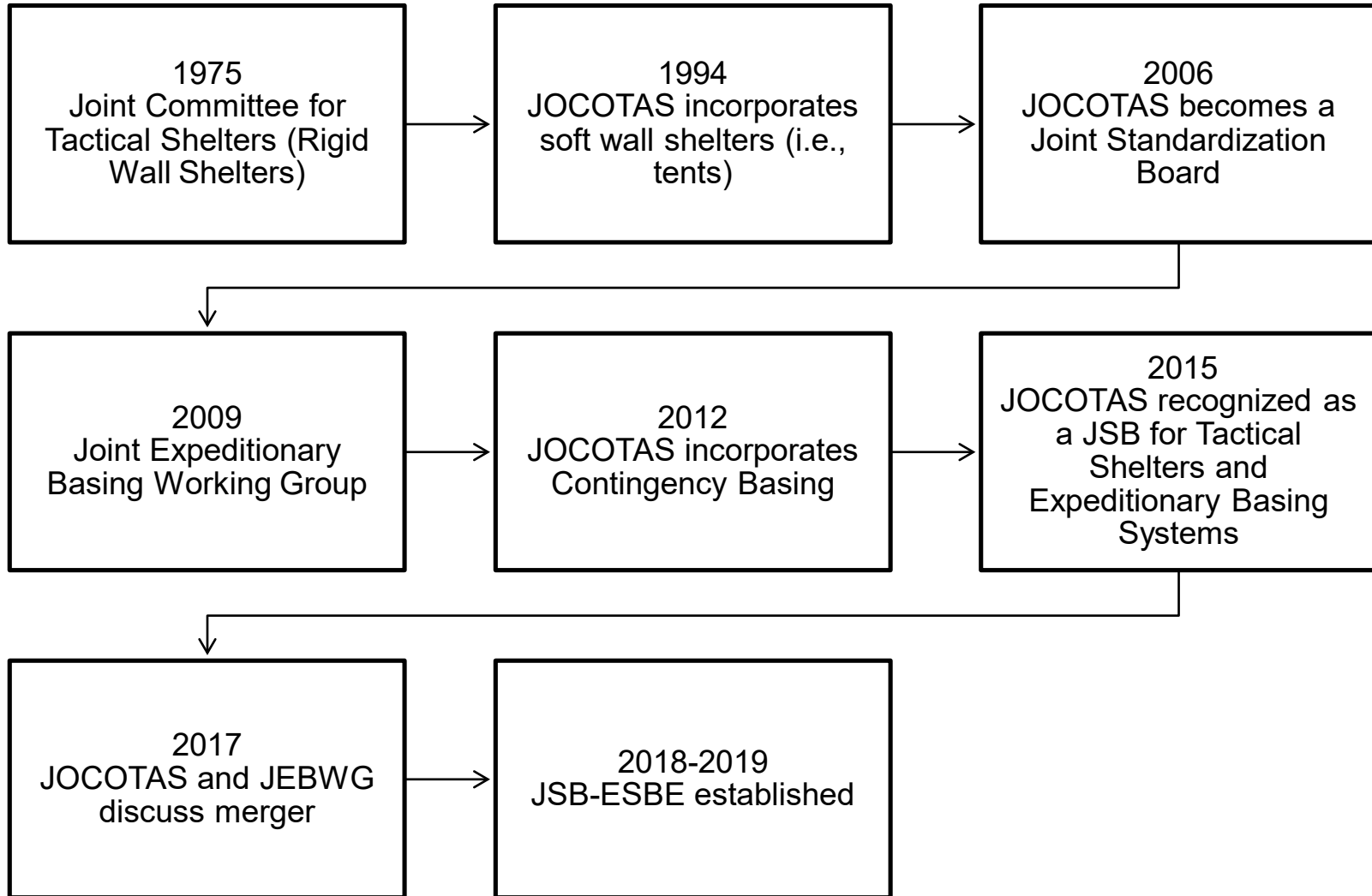
Chief, Engineered Systems Division, Sustainment Directorate

JSB-ESBE, Executive Secretary

DISTRIBUTION A.  
Approved for public release: distribution unlimited.

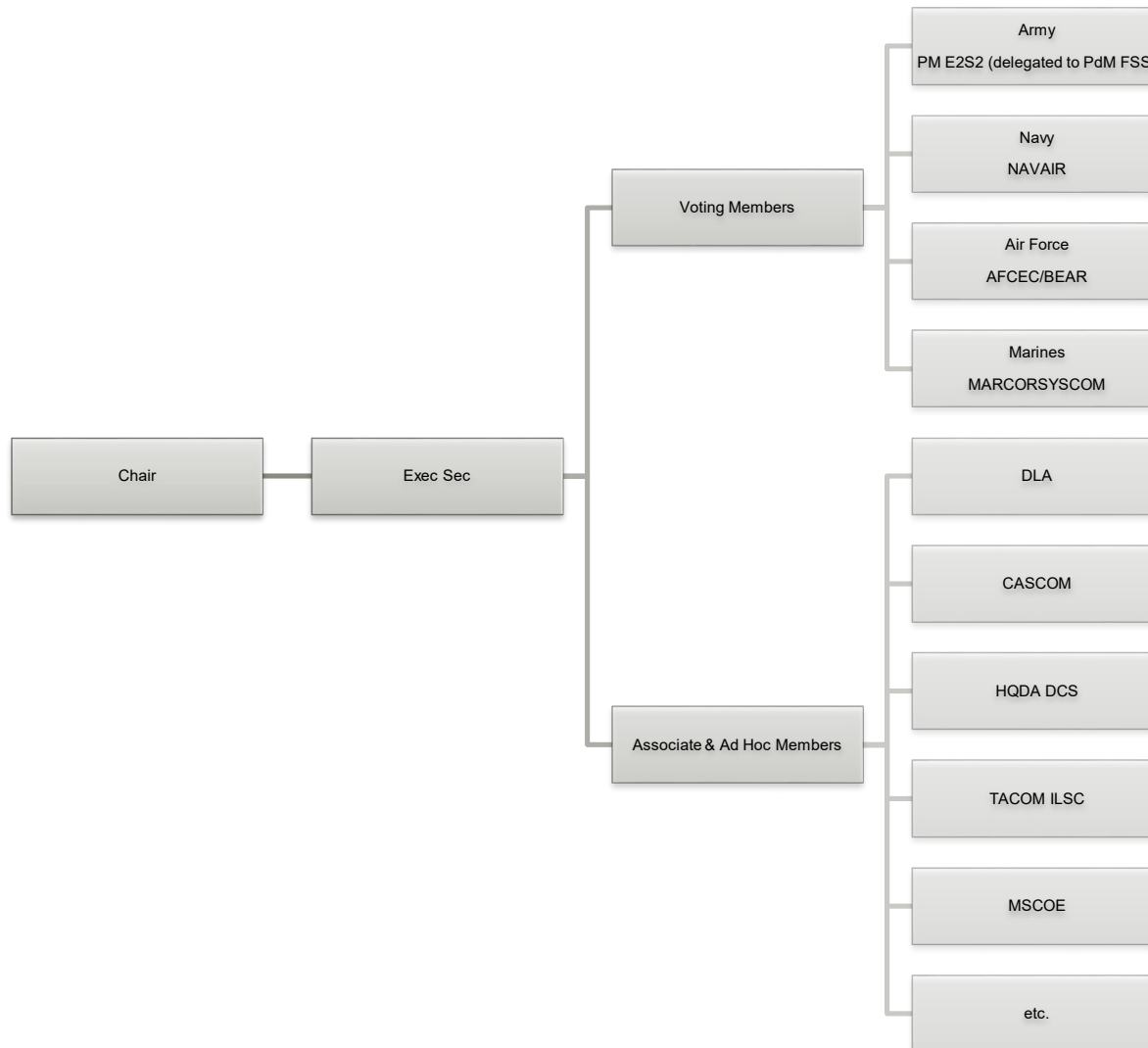


# JSB-ESBE HISTORY





# JSB-ESBE ORGANIZATION





# JSB-ESBE ACCOMPLISHMENTS



- **Primary Missions:**

- Minimize duplication of effort across the Services with regard to shelters and expeditionary basing equipment development and acquisition;
- Advocate the use of standard shelters and expeditionary basing equipment to promote interoperability, improve supportability, and reduce life cycle cost.
- Provide a forum to discuss issues that could affect requirements, procurements and fielding.



# OCT 2019 MEETING TOPICS



- **Service priorities**
- **Issues related to fielding and procurement of non-standard shelters**
- **Importance of Shelter Transportability**
- **Shelter needs in arctic environment**
- **Environmental Control Unit performance requirements**



# THE FUTURE



- **Finalize the catalog and post online**
- **Plan next meeting (virtual)**